

# Children's Cabinet Presentation to Commission on Youth

William A. Hazel, Jr., Secretary of Health and Human Resources

Dietra Y. Trent, Secretary of Education

September 20, 2017



# Virginia Governor's Children's Cabinet



© Michael L White, Governor's Office

# The Leadership



William A. Hazel, Jr.,  
Co-Chair  
Secretary of Health & Human  
Resources



Brian Moran  
Secretary of Public Safety &  
Homeland Security



Dietra Y. Trent,  
Co-Chair  
Secretary of Education



Todd Haymore  
Secretary of Commerce &  
Trade



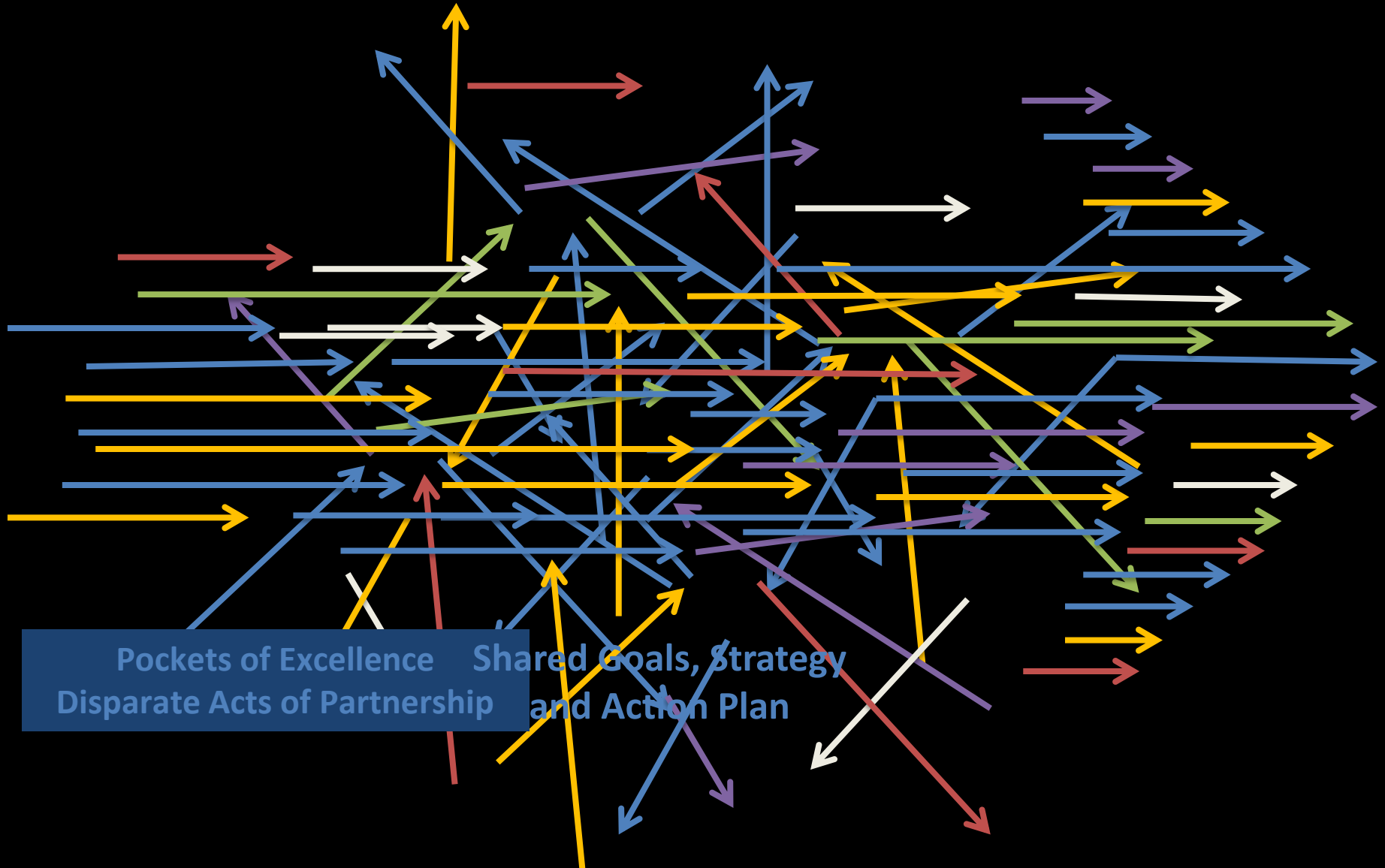
Dorothy McAuliffe  
First Lady of Virginia



Ralph Northam  
Lieutenant Governor of  
Virginia

# The Value

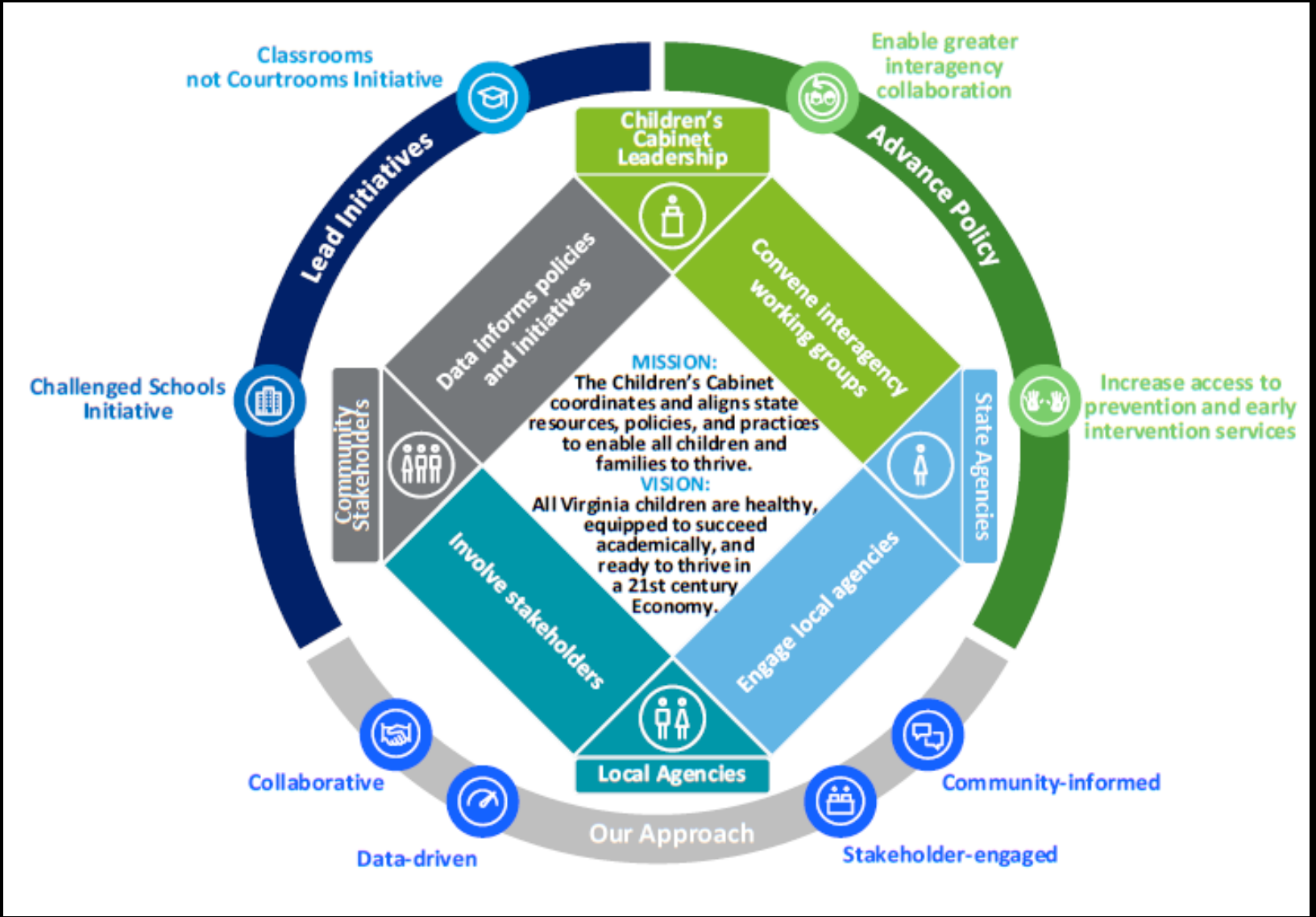
Align children's resources across Virginia





# The Approach

Facilitating Communication, Forging Connections, and Fostering Collaboration



# The Work

A wooden gavel is positioned vertically on a wooden block. The block has a red stamp that reads "TOP PRIORITY" in a stylized font. The background is a light gray.

## Lead the Challenged Schools Initiative

Enhance educational outcomes and workforce readiness in Petersburg, Norfolk, and Richmond by facilitating a replicable model to improve student achievement through high quality partnerships, including wraparound services

## Lead the Classrooms not Courtrooms Initiative

Reduce student suspensions, expulsions, referrals to law enforcement, and the disparate impact of these practices on minorities and students with disabilities

## Advance policy

Enable greater access to prevention services, high quality physical and behavioral health, nutrition, early childhood programs, stable housing, workforce training, social services, and community supports through schools and other convenient points of service

# The Ability to Convene

**DMAS**



Virginia Department of  
Behavioral Health &  
Developmental Services



COMMONWEALTH OF VIRGINIA



DEPARTMENT OF JUVENILE JUSTICE



VIRGINIA DEPARTMENT OF  
**EDUCATION**



VIRGINIA DEPARTMENT OF  
SOCIAL SERVICES





# Challenged Schools Initiative: Petersburg

- **Summer Feeding**: VDH, VDOE, & Petersburg City Public Schools partnered to make Petersburg Schools a Summer Food Service Program, serving 26,746 meals in 2016 and 27,632 meals in 2017.
- **Out of School Time**: The Petersburg YMCA, library, and public transit collaborated to provide a total of 500 students free access to all of their facilities over the summers of 2016 and 2017 combined.
- **Social Workers**: The Virginia Department of Social Services provided a grant to place 3 social workers in Petersburg City Public Schools to address chronic absenteeism. They received 133 referrals since January, 2017 with improved attendance and discipline for students served.
- **Trauma Informed Care**: 300 community members and 70 students participated in a summit, “Beyond ACEs: Building Community Resiliency” to train Petersburg staff, citizens, and youth on trauma & resiliency.
- **Stable housing**: A pilot has been launched through the Department of Housing and Community Development, Department of Education, and Petersburg City Public Schools to address barriers for high school seniors at risk of being homeless to increase their opportunity to graduate.
- **Resources**: The Children’s Cabinet over \$615,000 of additional resources through untapped federal, state, and private dollars to Petersburg.

# Challenged Schools Initiative: Richmond

- **Expanding access to high quality Out of School Time opportunities** - exploring how to leverage over \$292,000 in available state grant funds and reduce barriers for families to access existing child care subsidies
- **Meeting the Health/Mental Health needs of more students** – exploring a school division-university partnership with Social Work majors, and accessing over \$500,000 in untapped funding for non-mandated children's services for at-risk youth.
- **Early Childhood Family Engagement** - exploring ways to connect early childhood parent education, state programming, and outreach programs to family involvement efforts in public pre-K programs that can positively impact student behavior and attendance throughout the K-12 continuum.
- **Improving educational opportunities for justice-involved youth** – conducting a process analysis and identifying prevention, educational and policy alternatives that can continue and accelerate individual learning and keep students on track for graduation and success beyond K-12

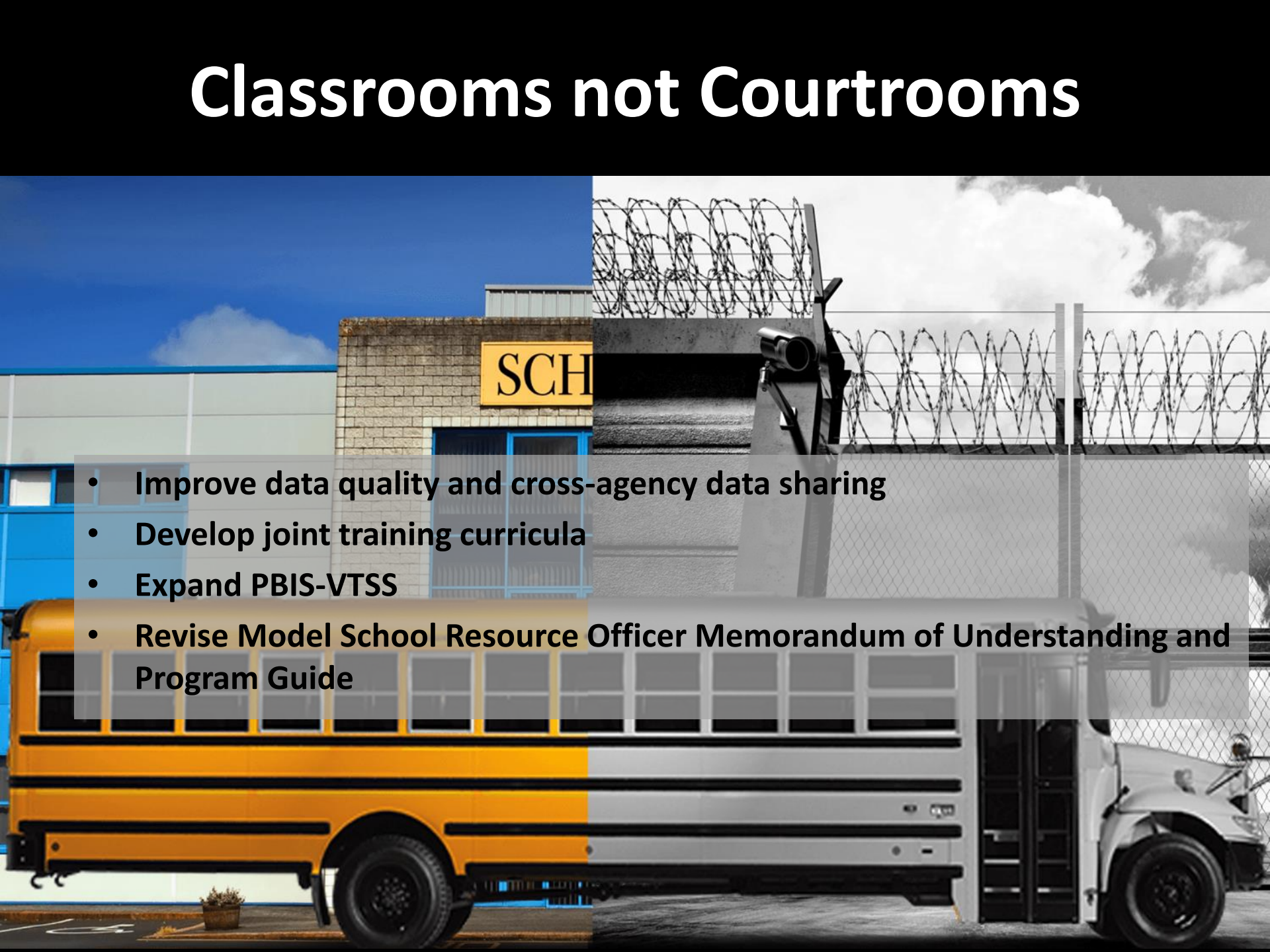
RICHMOND

CITY

PUBLIC

SCHOOLS

# Classrooms not Courtrooms

- 
- Improve data quality and cross-agency data sharing
  - Develop joint training curricula
  - Expand PBIS-VTSS
  - Revise Model School Resource Officer Memorandum of Understanding and Program Guide

# Fiscal Map



**Advance Policy**

*Trauma-Informed  
Care*



# Defining Trauma

*Individual trauma results from an event, series of events or set of circumstances that is experienced by an individual as physically or emotionally harmful or life threatening and that has lasting adverse effects on the individual's functioning and mental, physical, social, emotional or spiritual well-being.*

- SAMHSA definition 2014

# Adverse Childhood Experiences

ACEs = ADVERSE CHILDHOOD EXPERIENCES

*The three types of ACEs include*

ABUSE



Physical



Emotional



Sexual

NEGLECT



Physical



Emotional

HOUSEHOLD DYSFUNCTION



Mental Illness



Mother treated violently



Divorce



Incarcerated Relative



Substance Abuse

# Consequences of a Lifetime Exposure to Trauma

## BEHAVIOR



Lack of physical activity



Smoking



Alcoholism



Drug use



Missed work

## PHYSICAL & MENTAL HEALTH



Severe obesity



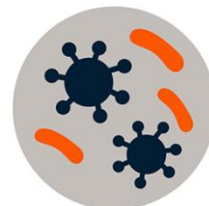
Diabetes



Depression



Suicide attempts



STDs



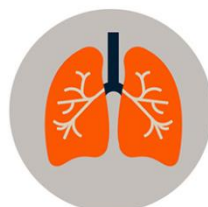
Heart disease



Cancer



Stroke



COPD



Broken bones



# ACEs Score: Adoption of At-Risk Health Behaviors

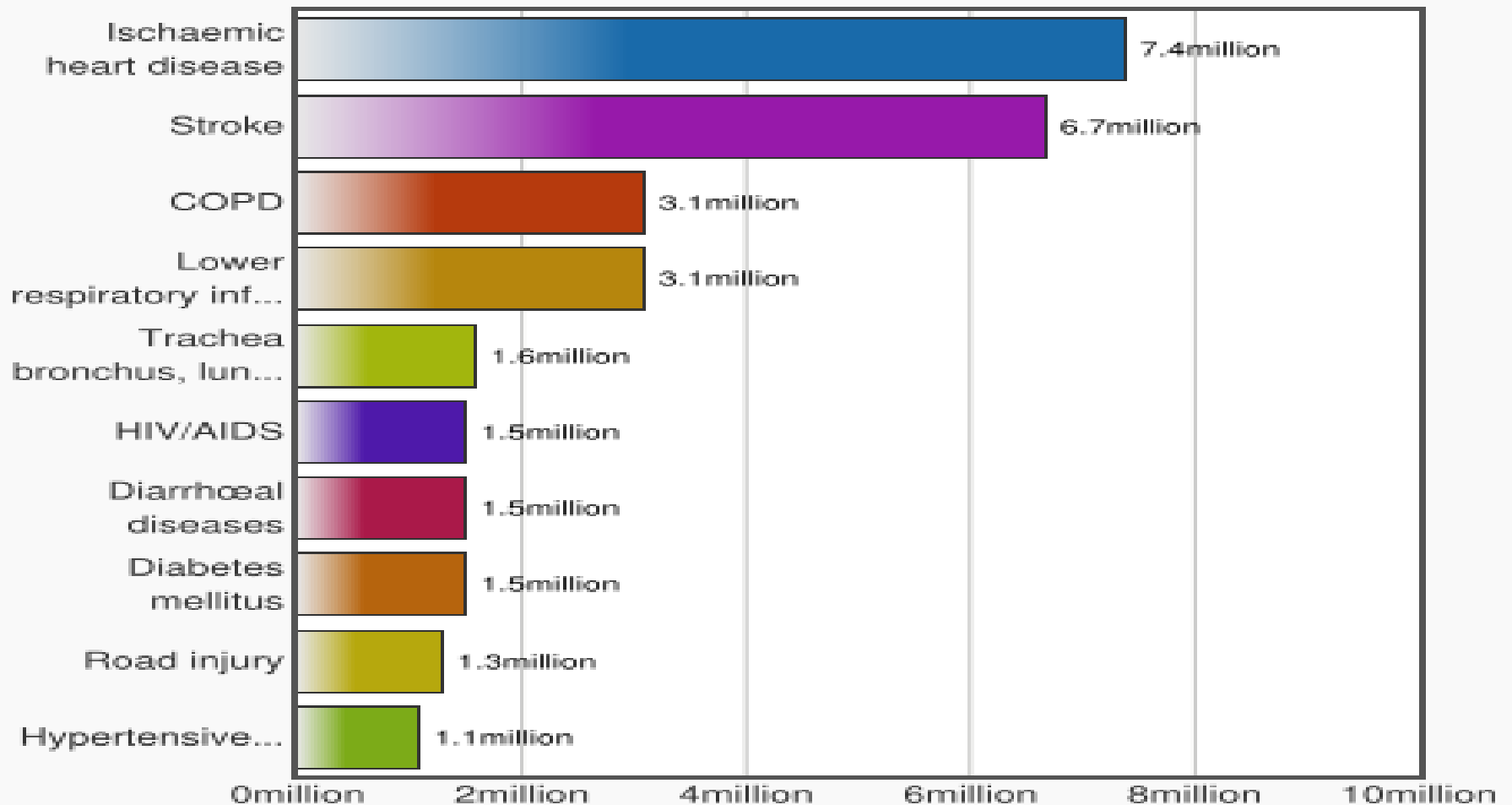
<http://www.iowaaces360.org/impact-of-aces.html>

ACE Score	Risk
4	<ul style="list-style-type: none"> <li>- 260% more likely to develop COPD</li> <li>- 500% more likely to develop alcoholism</li> <li>- Females are 500% more likely to become victims of domestic violence.</li> <li>- Females are almost 900% more likely to become victims of rape</li> <li>- 242% more likely to smoke</li> <li>- 222% more likely to become obese</li> <li>- 357% more likely to experience depression</li> <li>- 443% more likely to use illicit drugs</li> <li>- 1133% more likely to use injected drugs</li> <li>- 298% more likely to contract an STD</li> <li>- 1525% more likely to attempt suicide</li> <li>- 555% more likely to develop alcoholism</li> </ul>
6	<ul style="list-style-type: none"> <li>- 250% more likely to become adult smoker</li> <li>- A male child with an ACE score of 6 has a 4,600% increase in the likelihood that he will become an IV drug user later in life</li> <li>- More likely to die 20 years younger than a person with no ACEs</li> </ul>
7	<ul style="list-style-type: none"> <li>- Adult suicide attempts increased 3,000%</li> <li>- Childhood and adolescent suicide attempts 5,100%</li> <li>- 5,000% more likely to develop hallucinations</li> <li>- Increased the risk of suicide attempts <b>51-fold</b> among children/adolescents</li> <li>- Increased risk of suicide attempts <b>30-fold</b> among adults</li> </ul>

# ACEs and Leading Causes of Death

## ACEs Linked to 7 out of the 10

The 10 leading causes of death in the world  
2012



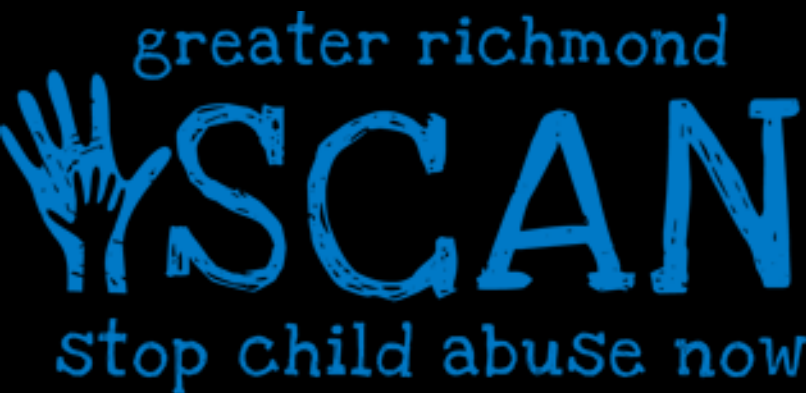
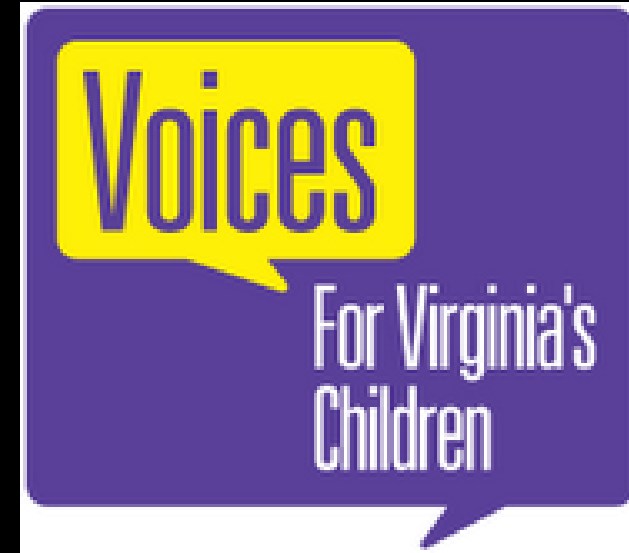
# On Becoming Trauma Informed



*"I'm right there in the room, and no one even acknowledges me."*

*Trauma-informed care shifts the focus from:  
‘What’s wrong with you?’ to  
‘What happened to you?’*

# Partners in this work



# FACT

- The Family and Children's Trust Fund (FACT) is a public-private partnership established through legislation in 1986
- Purpose: to raise and distribute funds for the prevention and treatment of family violence across the life span
- Funding provided through license plate sales, state tax check off program and donations
- Governed by a gubernatorial appointed Board of Trustees
- Administrative support provided by the VA Dept. of Social Services
  - Coordinate the Child Abuse and Neglect Advisory Committee formally the Governor's Advisory Committee on Child Abuse and Neglect

A close-up, slightly high-angle shot of a road surface. The road is dark asphalt, and a grid of large, light-colored question marks is painted on it. The question marks are arranged in a regular pattern, with some appearing more prominent than others due to perspective and lighting. A semi-transparent horizontal band is overlaid across the middle of the image, containing the text "ANY QUESTIONS?".

**ANY QUESTIONS?**